

屏東縣崁頂鄉第 1 及第 3 公墓

頂孝段 985



頂孝 992



頂孝 996



頂孝段 996-1



頂孝段 996-2



頂孝段 996-3



頂孝 997



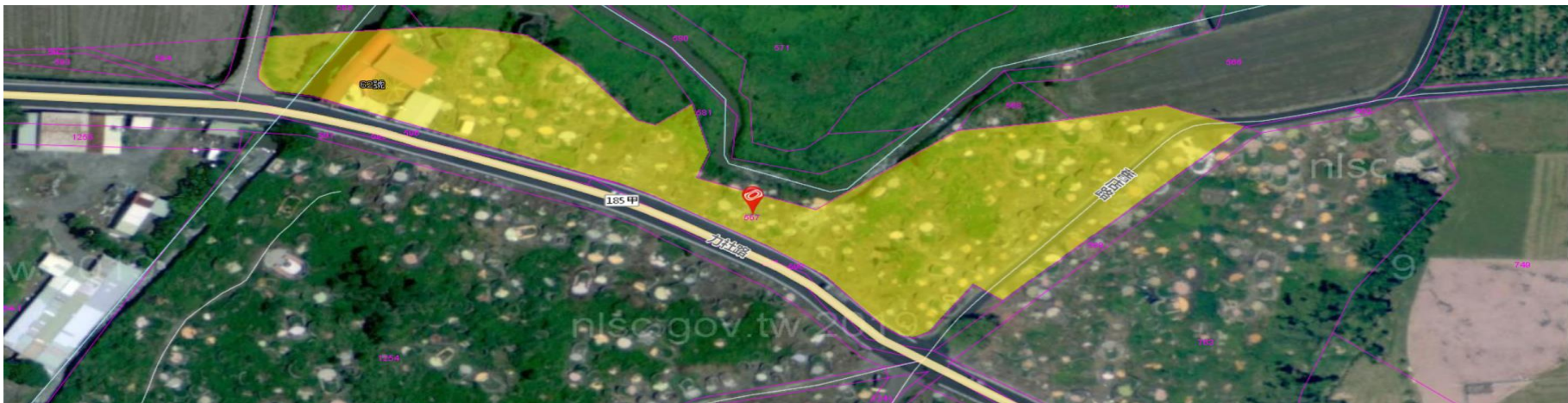
頂孝 999



頂孝 1009



頂忠 567



頂忠 591



頂忠 593



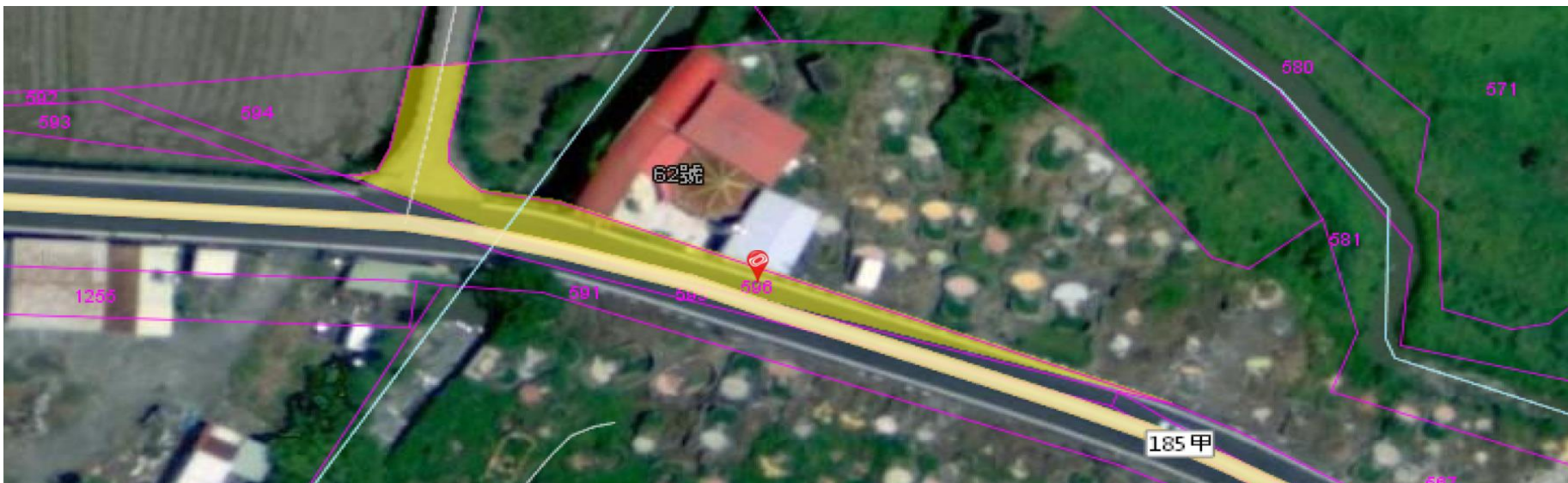
頂忠 594



頂忠 596



頂忠 598



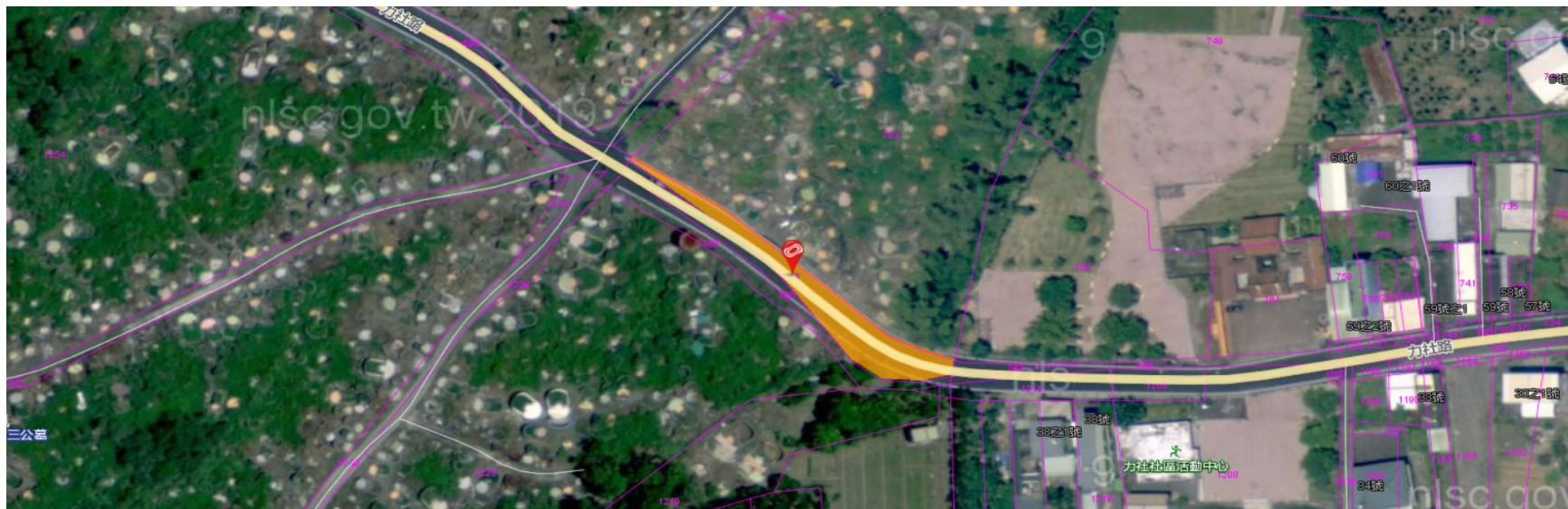
頂忠 599



頂忠 763



頂忠 764



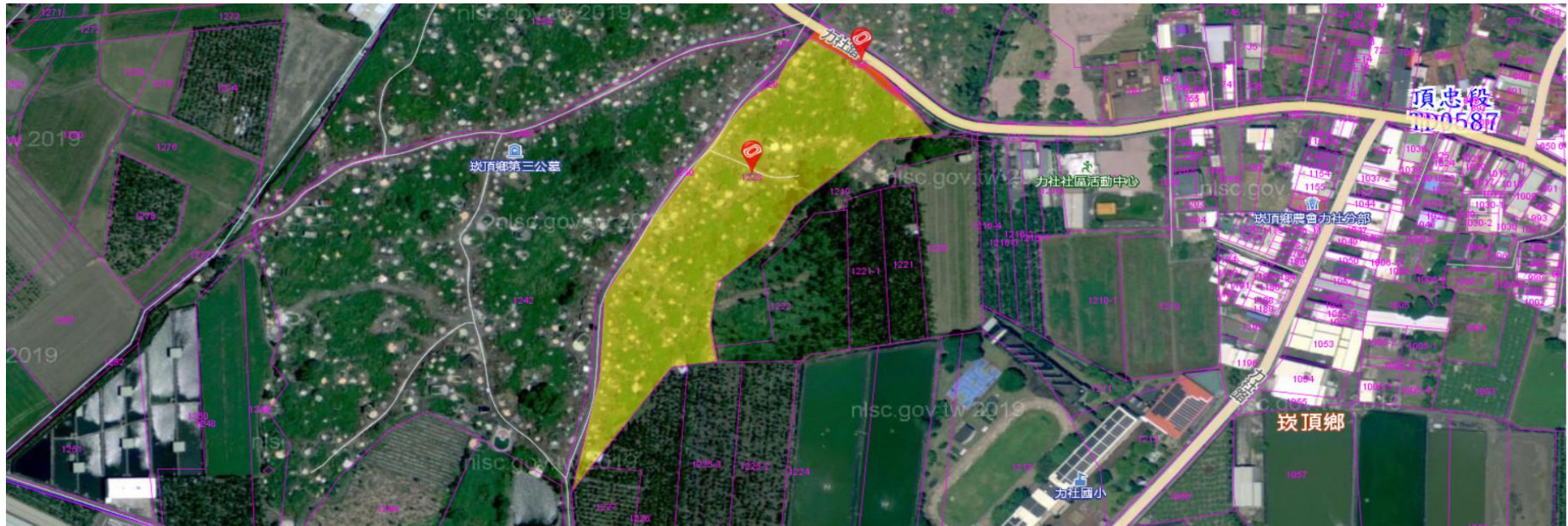
頂忠 766



頂忠 1228



頂忠 1229



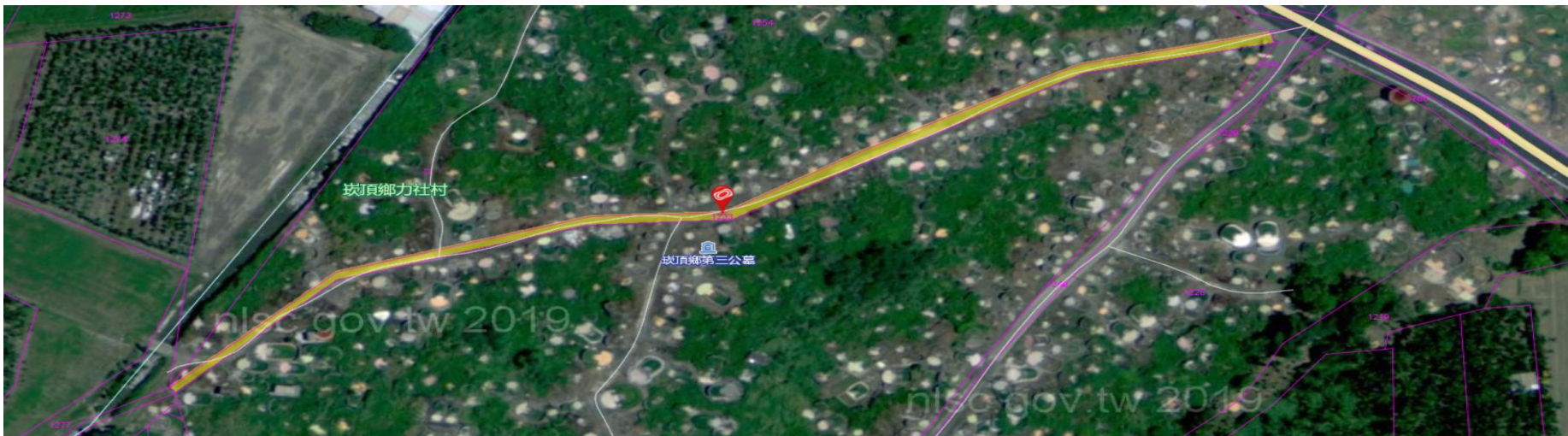
頂忠 1241



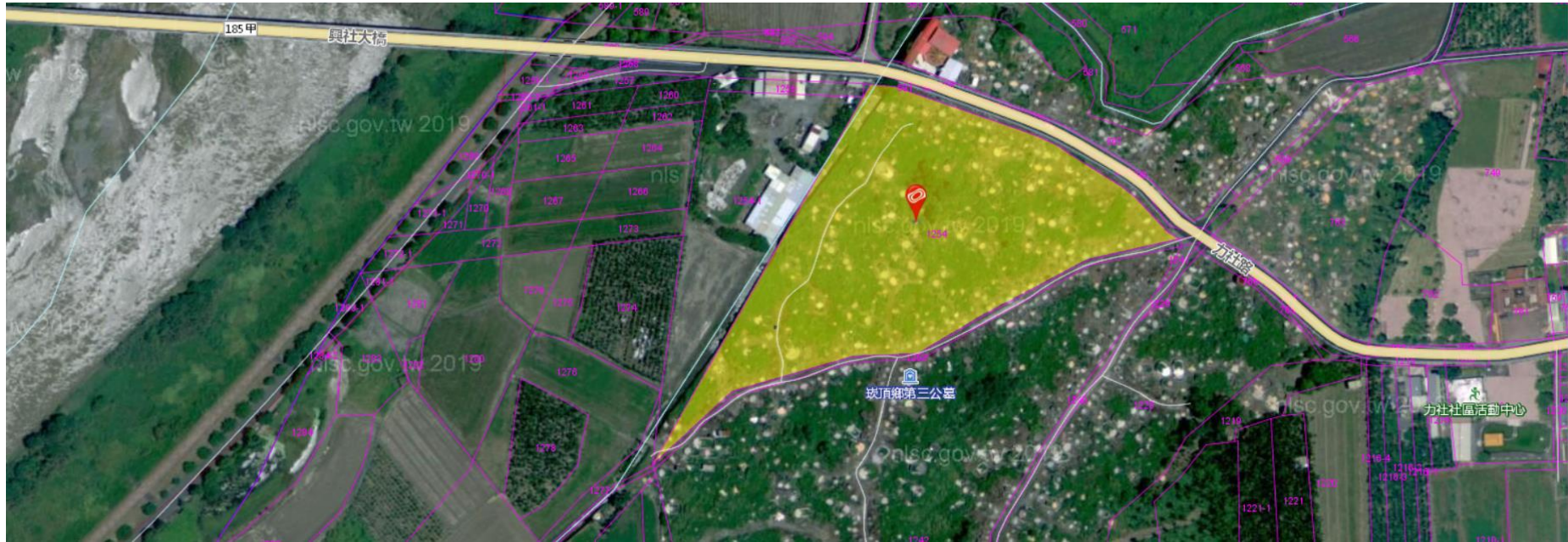
頂忠 1242



頂忠 1253



頂忠 1254



頂忠 1254-1



頂忠 1255



頂忠 1257

